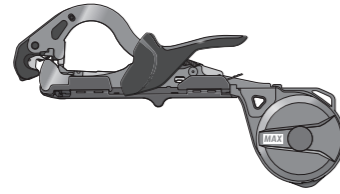


# TAPENER MAX

HT-R45C(RD), HT-R45L(OR)

INSTRUCTION MANUAL

Инструкция за употреба



HT11774  
200907-00/00

### WARNING:

BEFORE USING THIS TOOL, STUDY THIS MANUAL TO ENSURE SAFETY AND FOLLOW WARNING INSTRUCTIONS. KEEP THESE INSTRUCTIONS WITH THE TOOL FOR FUTURE REFERENCE.

### ВНИМАНИЕ:

ПРЕДИ ДА ИЗПОЛЗВАТЕ ТОЗИ ИНСТРУМЕНТ, ПРОЧЕТЕТЕ ВНИМАТЕЛНО ТАЗИ ИНСТРУКЦИЯ И СЕ ЗАПОЗНАЙТЕ С МЕРКИТЕ ЗА БЕЗОПАСНОСТ. ЗАПАЗЕТЕ ТАЗИ ИНСТРУКЦИЯ ЗАЕДНО С ИНСТРУМЕНТА ЗА БЪДЕЩА УПОТРЕБА.

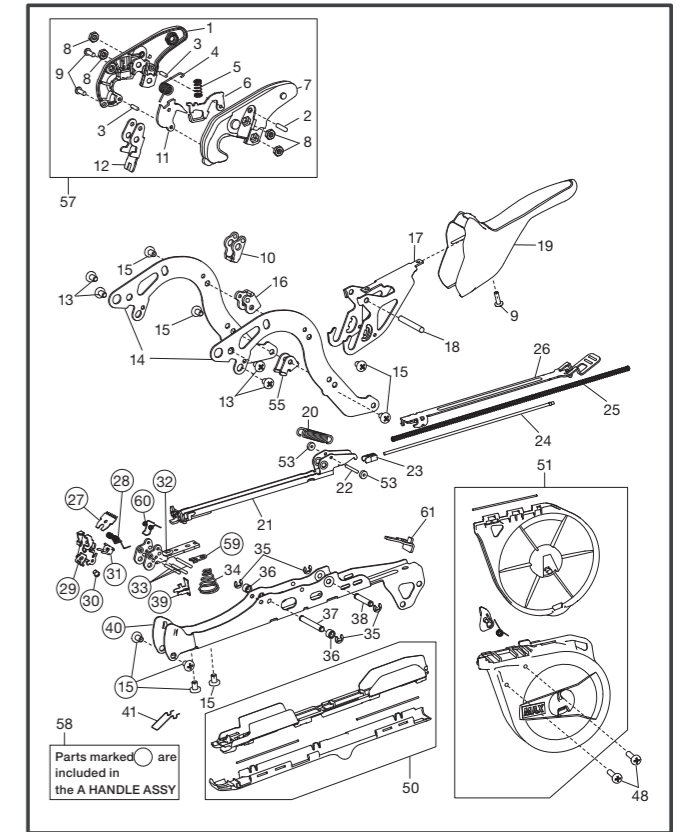
## SPECIFICATIONS / СПЕЦИФИКАЦИИ

Name / Име	HT-R45C(RD)	HT-R45L(OR)
Product code / Продуктов код	HT90125	HT90127
Dimensions / Размери	148mm(H) × 353mm(L) × 37mm(W)	163mm(H) × 392mm(L) × 37mm(W)
Usable Staples / Възможни телчета	MAX STAPLES 604C-L, 604E-L	
Loadable Number of Staples / Брой телчета, побиращи се в инструмента	MAX STAPLES 604C-L (200pcs / stick) 604E-L (172pcs / stick)	
Usable Tape / Възможни ленти	MAX TAPE-10, 0.1mm T × 11mm W × 40m L (White) MAX TAPE-15, 0.15mm T × 11mm W × 26m L (Blue) MAX TAPE-25, 0.25mm T × 11mm W × 16m L (Red)	MAX TAPE-215, 0.15mm T × 12mm W × 55m L (White) MAX TAPE-225, 0.25mm T × 12mm W × 33m L (Blue)
Weight / Тегло	450 гр	475 гр
Maximum Bundling Limit / Максимален обхват на лентата	Макс. 45mmφ	
Blade / Нож	MAX CUTTER FOR TAPENER SERIES продуктов код TC90045	
Actual Staple Size / Фигура на телчетата		

## PARTS LIST / СПИСЪК ЧАСТИ

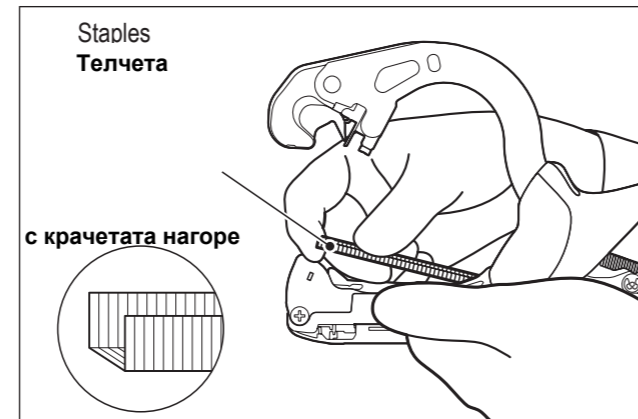
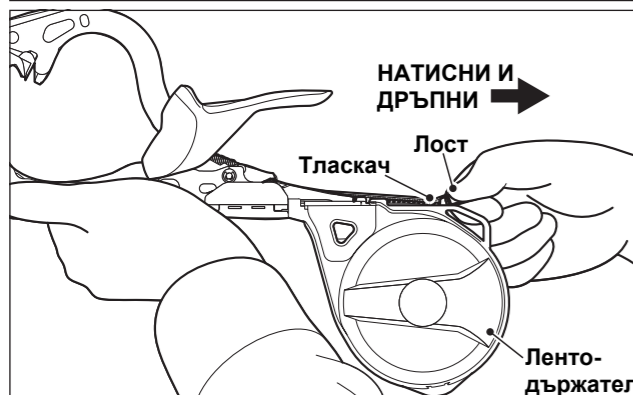
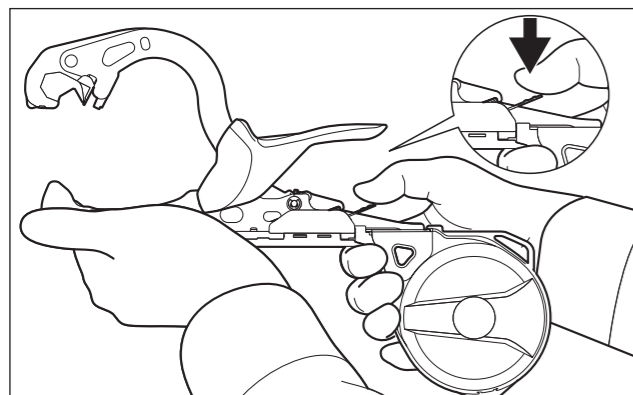
Index No.	Parts Code No.	Description
1	HT11778	B CASE S2(R45C)
2	FF31714	STRAIGHT PIN 1714
3	FF31712	STRAIGHT PIN 1712
4	KK33402	TORSION SPRING 3402
5	KK29192	COMPRESSION SPRING 9192
6	HT11768	LOCK PLATE S2(R45C)
7	HT11627	A CASE
8	CC43107	NAT M4(3)
9	AA05719	+PH TAP SCREW 3×8 (P)
10	HT11632	CLINCHER
11	HT11622	TAPE CATCH
12	HT11671	TAPE PLATE S
13	AA25537	SCREW BIND M4×6
14	HT11618	CLINCHER ARM
15	AA05716	SCREW BIND 4×6 (S-TIGHT)
16	HT11619	ARM SUPPORT
17	HT11637	B HANDLE
18	FF31713	STRAIGHT PIN 1713
19	HT11755	GRIP(R45C)
19	HT11769	GRIP(R45L)
20	KK13390	EXTENSION SPRING 3390
21	HT70106	MAGAZINE UNIT(R45C)
22	FF31716	STRAIGHT PIN 1716
23	HT11761	PUSHER(R45C)
24	HT11610	SPRING GUIDE ROD
25	KK29131	COMPRESSION SPRING 9131
26	HT11609	STAPLE COVER
27	TC90045	MAX CUTTER FOR TAPENER SERIES
28	KK34099	TORSION SPRING 4099
29	HT70070	TAPE GUIDE S UNIT
30	FF41740	STEP PIN 1740
31	HT11763	TAPE GUIDE SUPPORT S(R45C)
32	HT11781	TAPE GUIDE BASE S2(R45C)
33	FF31711	STRAIGHT PIN 1711
34	KK83018	CONICAL SPRING 3018
35	JJ10103	E-RING 3.2
36	HT11615	ROLLER
37	FF31643	STRAIGHT PIN 1643
38	FF31644	STRAIGHT PIN 1644
39	HT11754	DRIVER (R45C)
40	HT11788	A HANDLE S(R45C)
41	HT11603	TAPE SPRING
48	AA05715	SCREW BIND 4×16 (P)
50	HT70097	TAPE HOLDER ASSY(HT-S)
51	HT70107	BOBBIN CASE ASSY(R45C)

Index No.	Parts Code No.	Description
51	HT70109	BOBBIN CASE ASSY(R45L)
53	HT11669	RUBBER WASHER 1.7×6×2
55	HT11697	ARM SUPPORT S
57	HT70111	TAPE CATCH S2 ASSY(R45C)
58	HT81017	A HANDLE ASSY(R45C)
59	HT11762	BACKUP WASHER (R45C)
60	KK34101	TORSION SPRING 4101
61	HT11766	JAM CLEARING STICK(R45C)



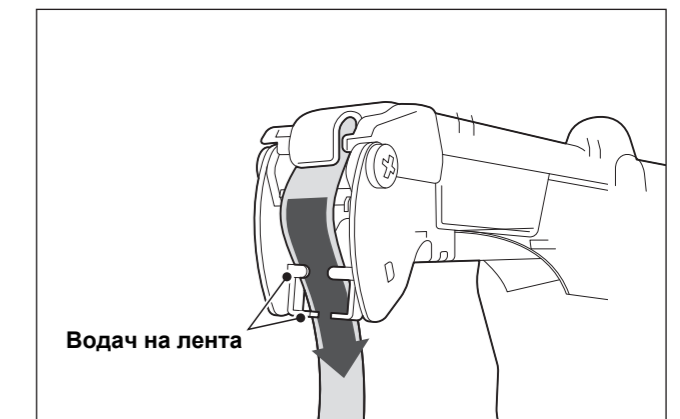
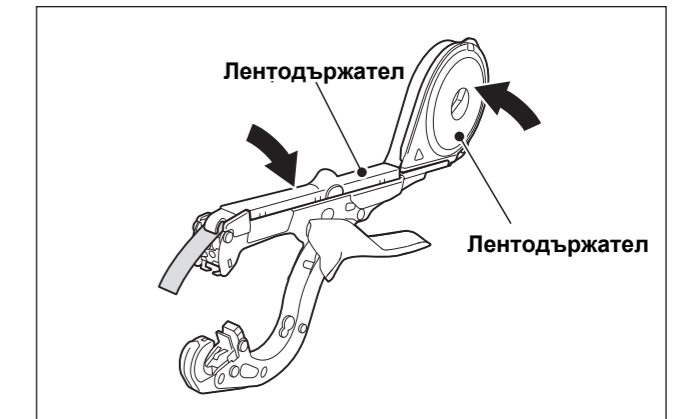
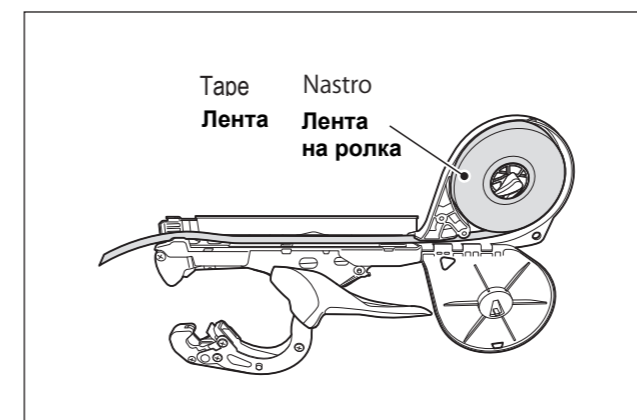
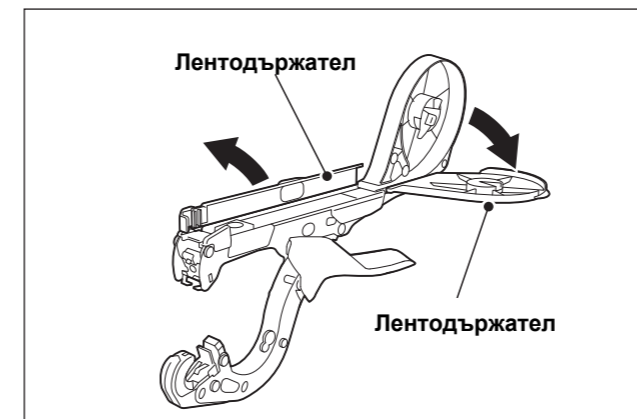
## HOW TO USE / КАК ДА ИЗПОЛЗВАМЕ

### ① How to Load Staples / Как да поставим телчета



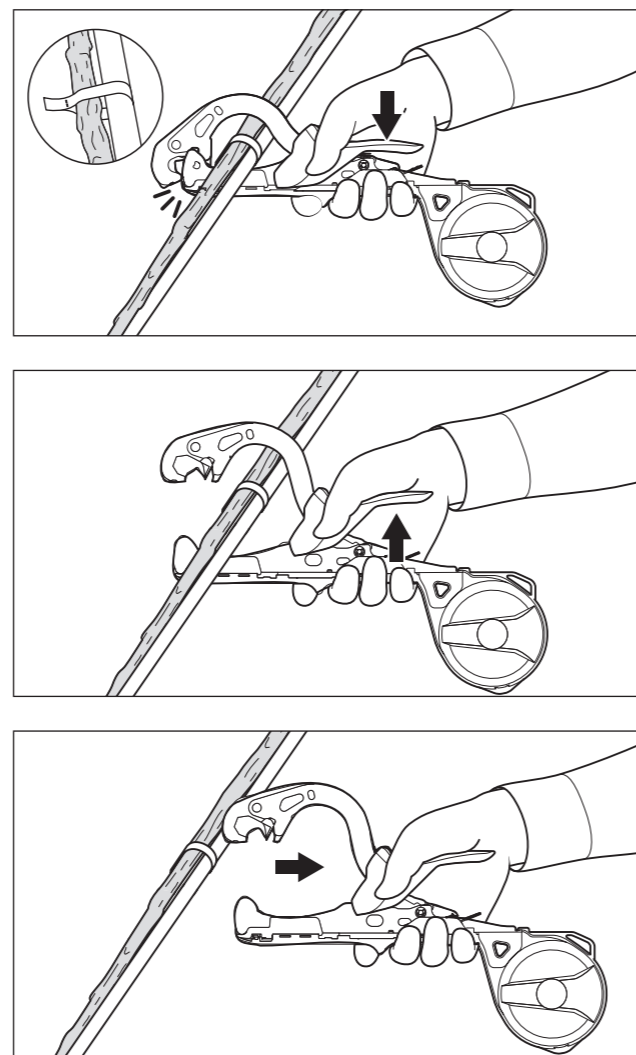
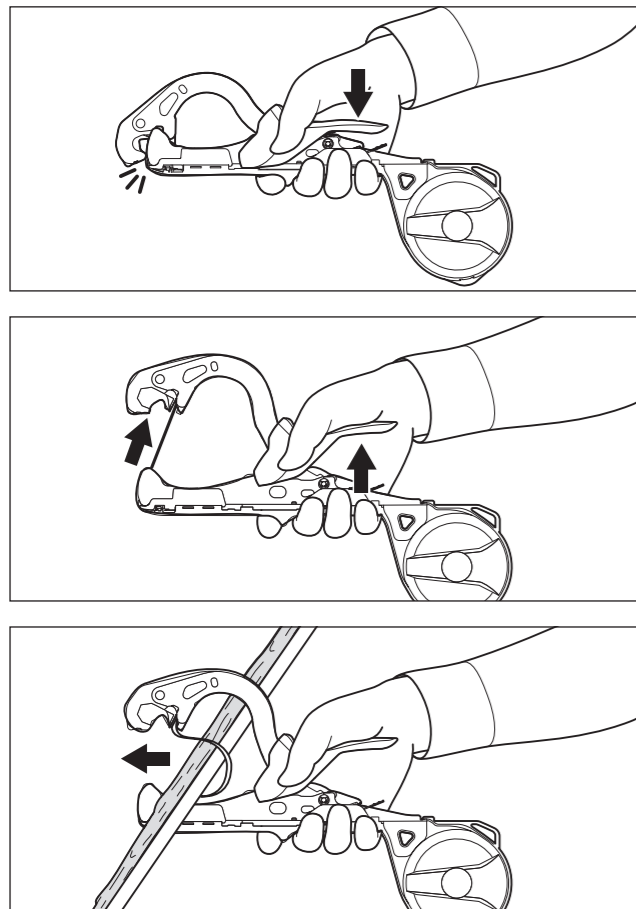
USE MAX STAPLES // ИЗПОЛЗВАЙТЕ ТЕЛЧЕТА MAX, модел 604E-L

### ② How to Load the Tape / Как да поставите лентата

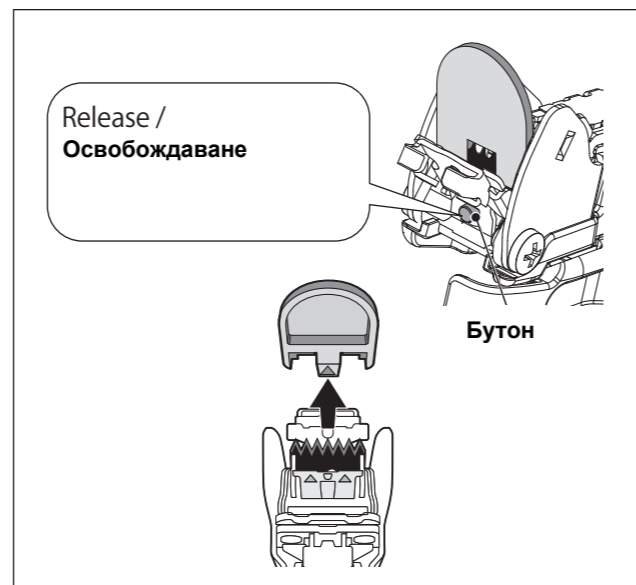
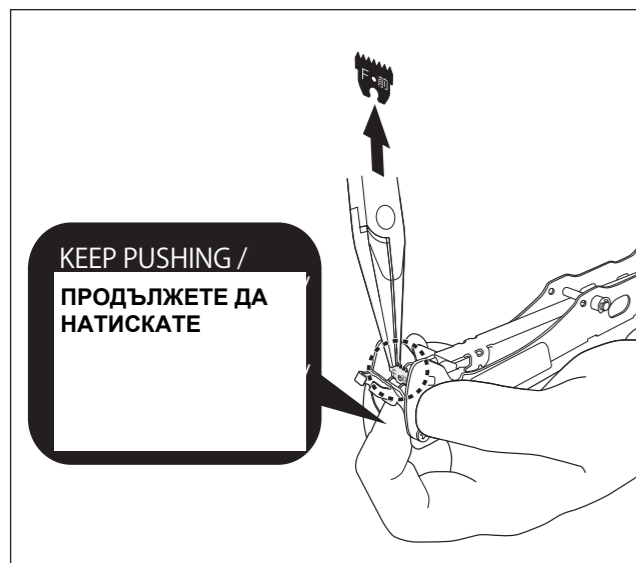
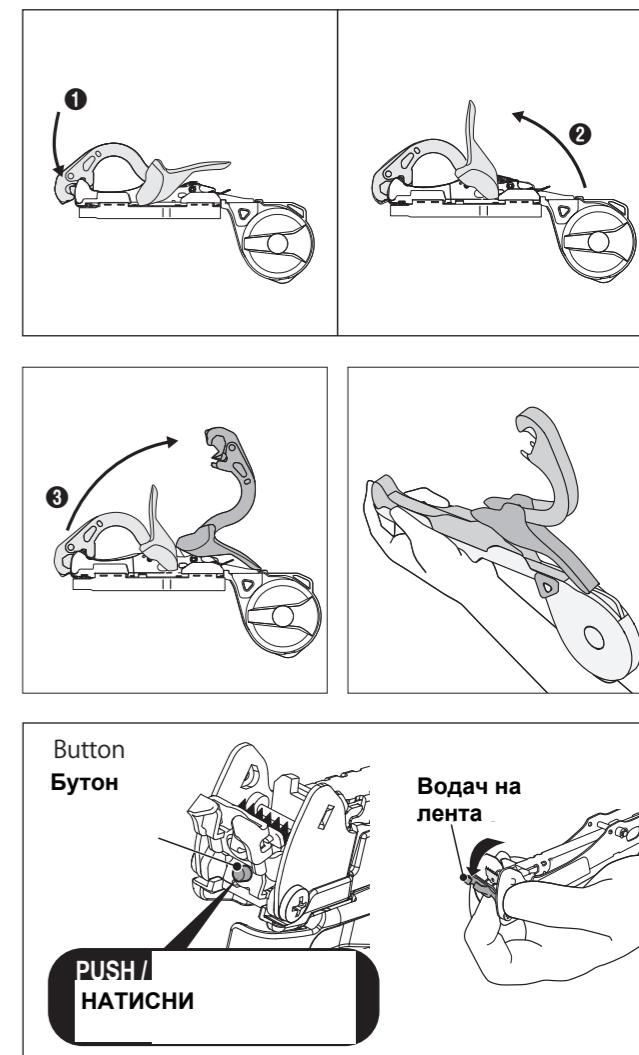
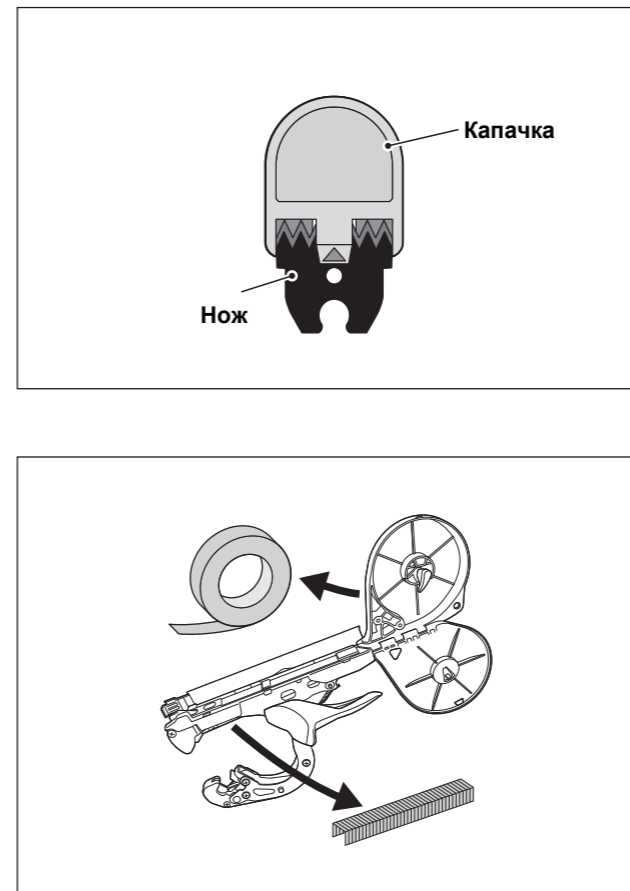


USE MAX TAPE / Използвайте ленти MAX

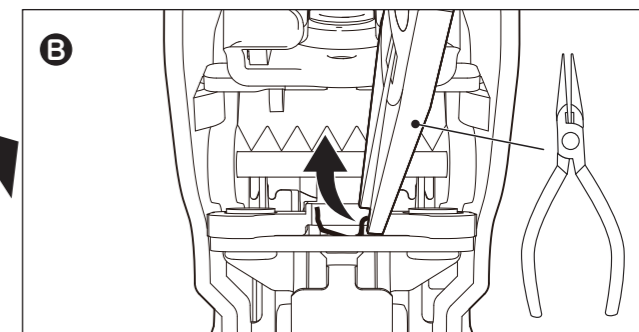
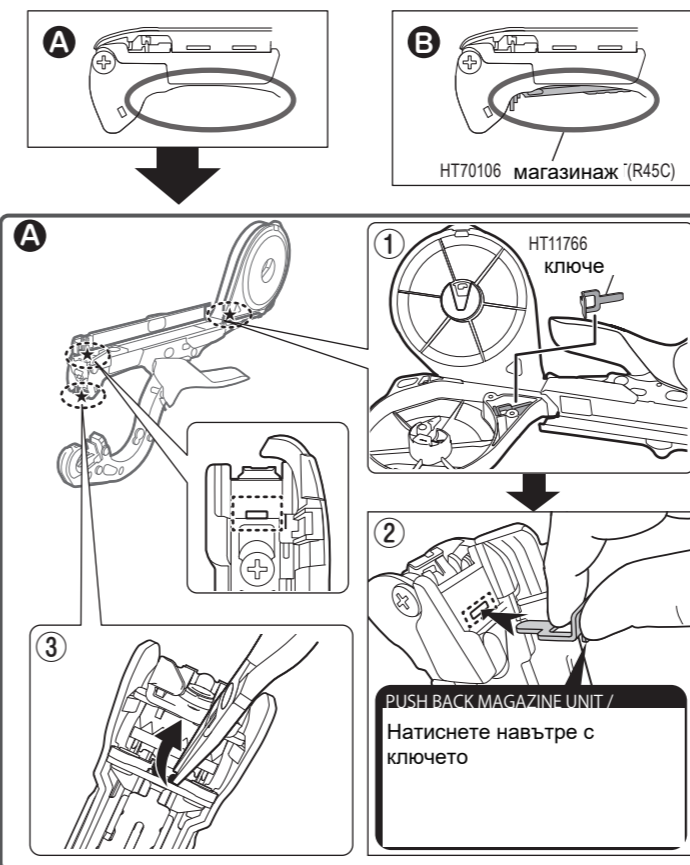
③ How to Bind Objects / Как да привържете обект



④ How to Change Blade / Как да смените нож

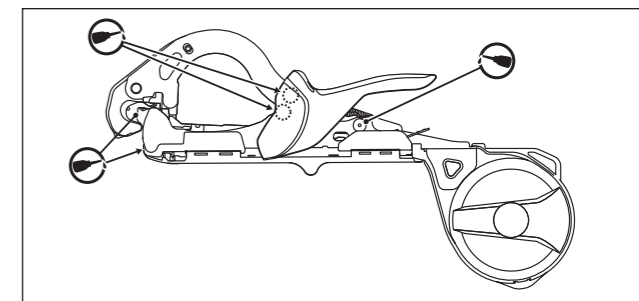


⑤ How to Remove Jammed Staples / Как да премахнем заклещени телчета

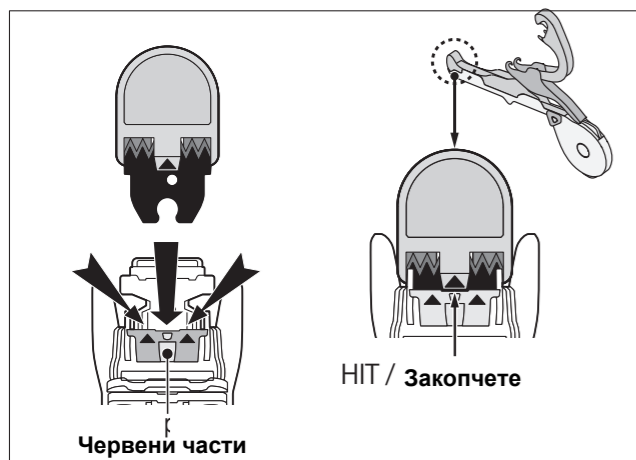


⑥ AFTER USE / СЛЕД УПОТРЕБА

Apply oil / Смажете го на указаните места



Turbin oils ISO VG32 /



CHECK / ПРОВЕРЕТЕ

